



12 Hale Lodge , Roxborough Park  
Harrow On the Hill, HA1 3BA

£318,500



## 12 Hale lodge, Roxborough Pk

Harrow On the Hill, HA1 3BA

A spacious and light filled one bedroom apartment favourably positioned on the second floor in this small development on this sought after road on the slopes of Harrow on The Hill. This well presented property offers a generous double aspect Living/Dining Room, a Double Bedroom, Modern Fitted Kitchen & Bathroom. Long 995 Year Lease plus a Share of the Freehold. Gas Central Heating, Neat Well Kept Communal Gardens & Resident Parking on a first come first served basis.

A short walk to Harrow on the Hill Metropolitan/Chiltern Line and Harrow town centre with its excellent range of shopping facilities & amenities.

Communal Front Door with Entry Phone

Stairs to Second Floor

Own Front Door

Entrance Hall

Lounge/Dining Room

Kitchen

Bedroom

Bathroom

Outside

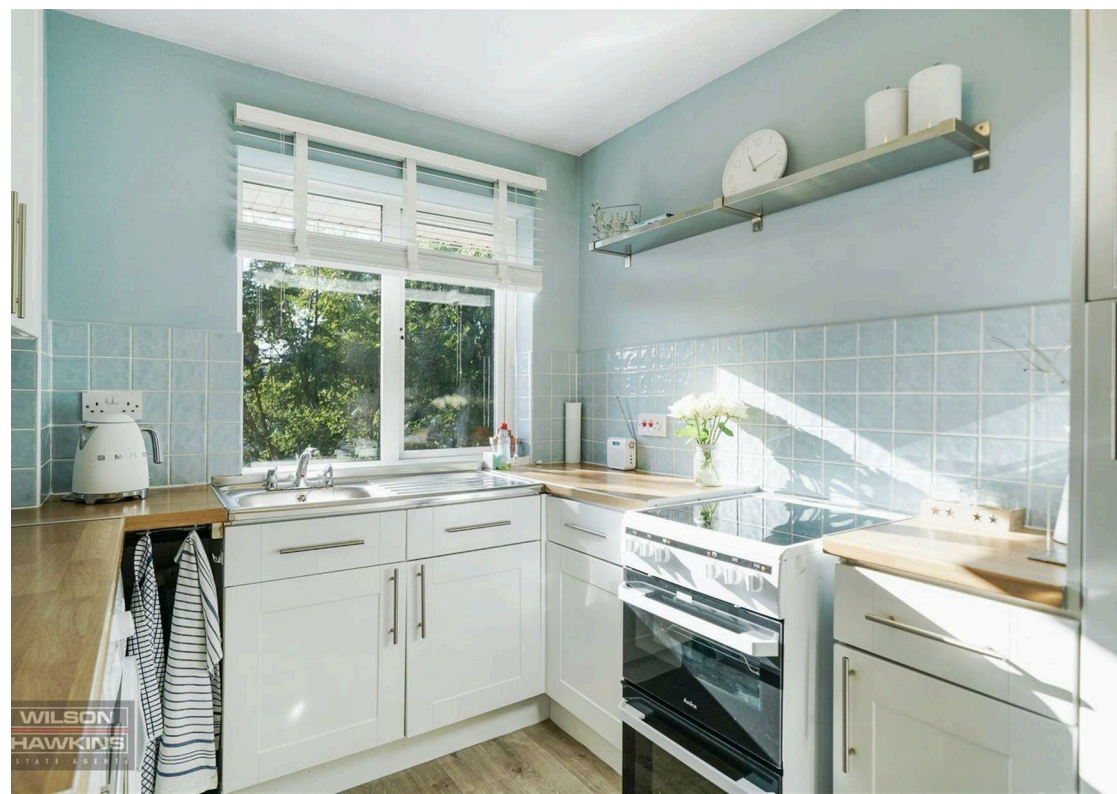
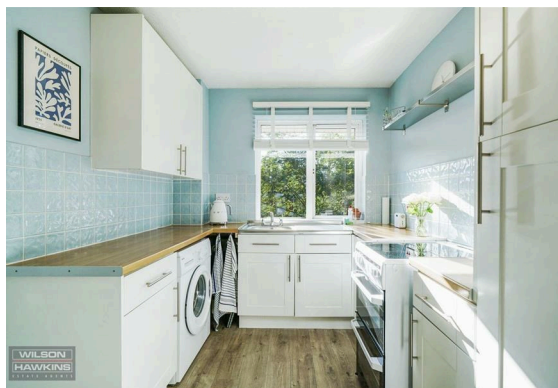
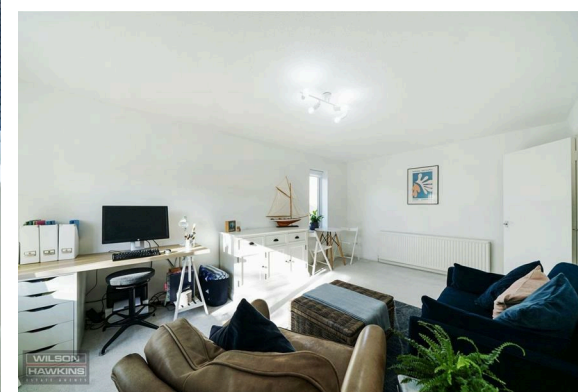
Resident Parking

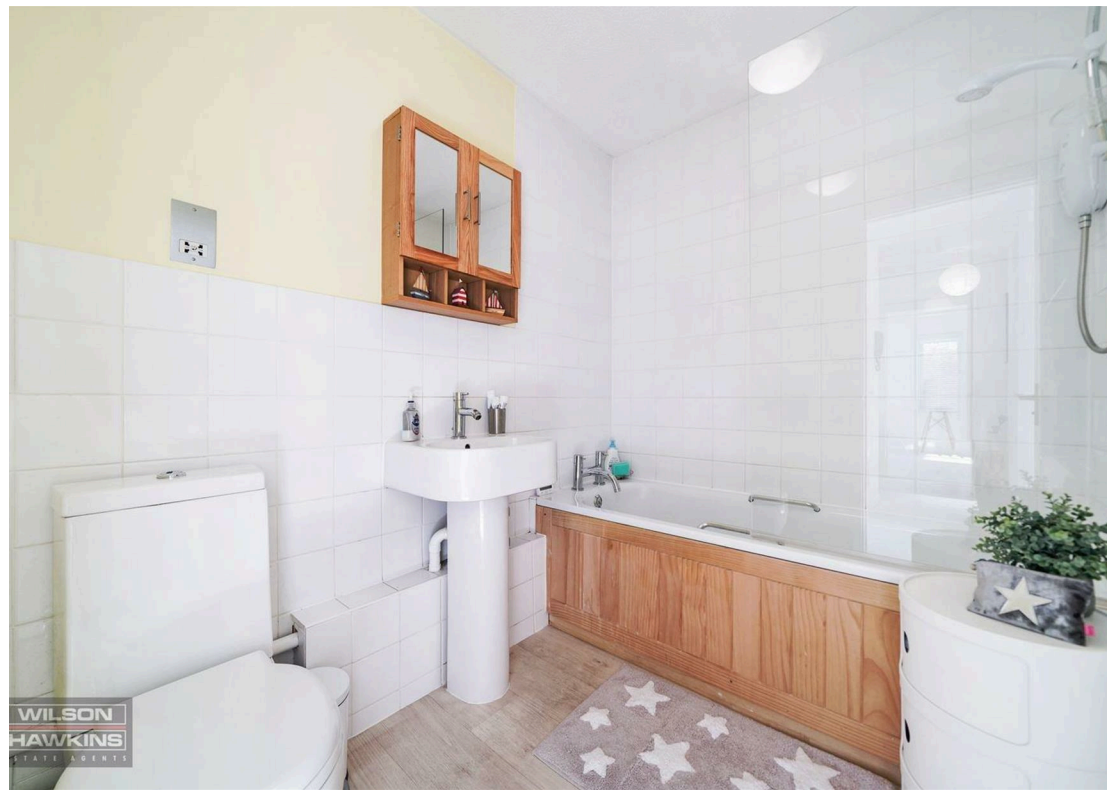
Communal gardens

Lease 995 Years Plus Share of Freehold

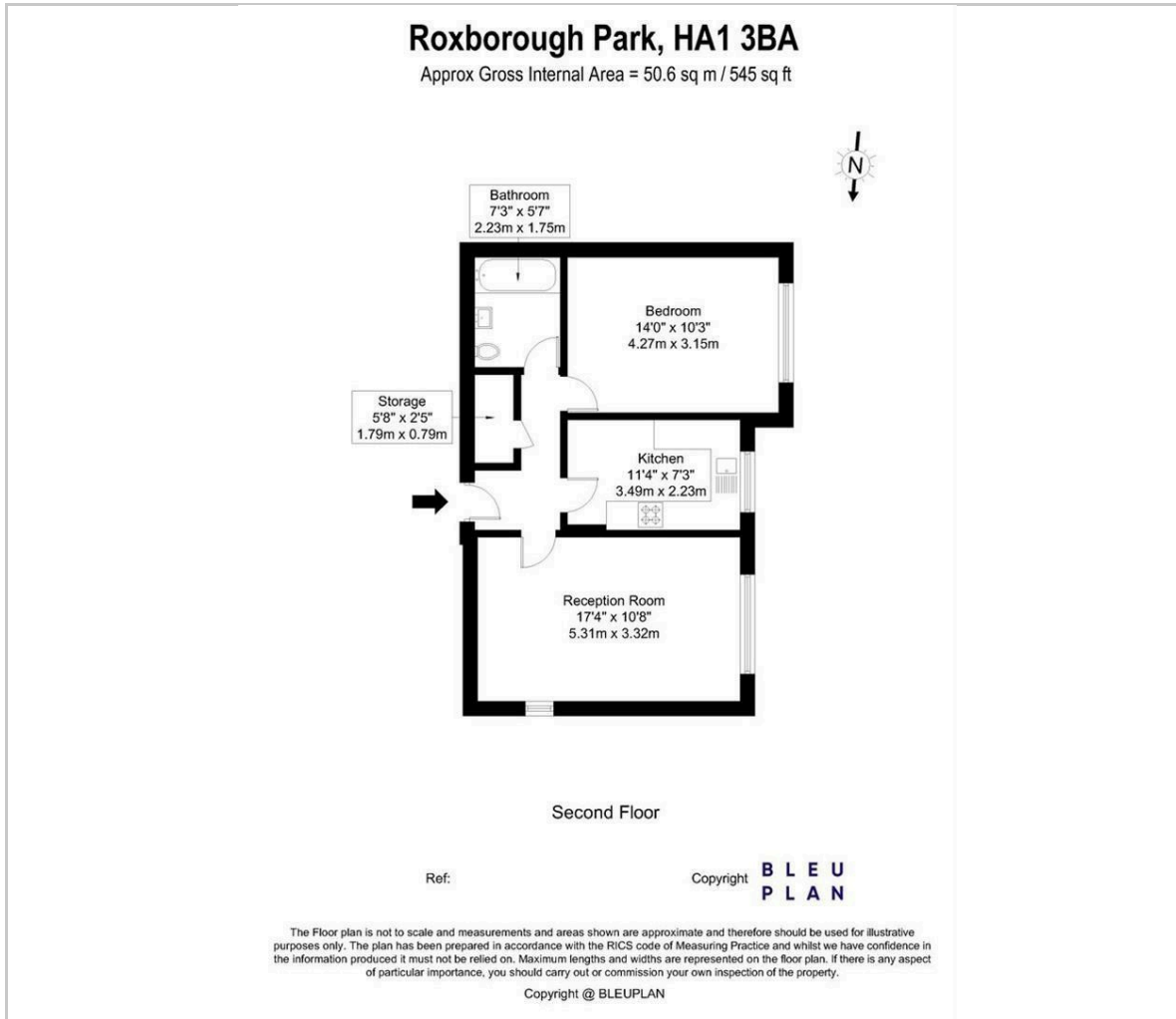
Service Charge £780 pa

Council Tax Band C





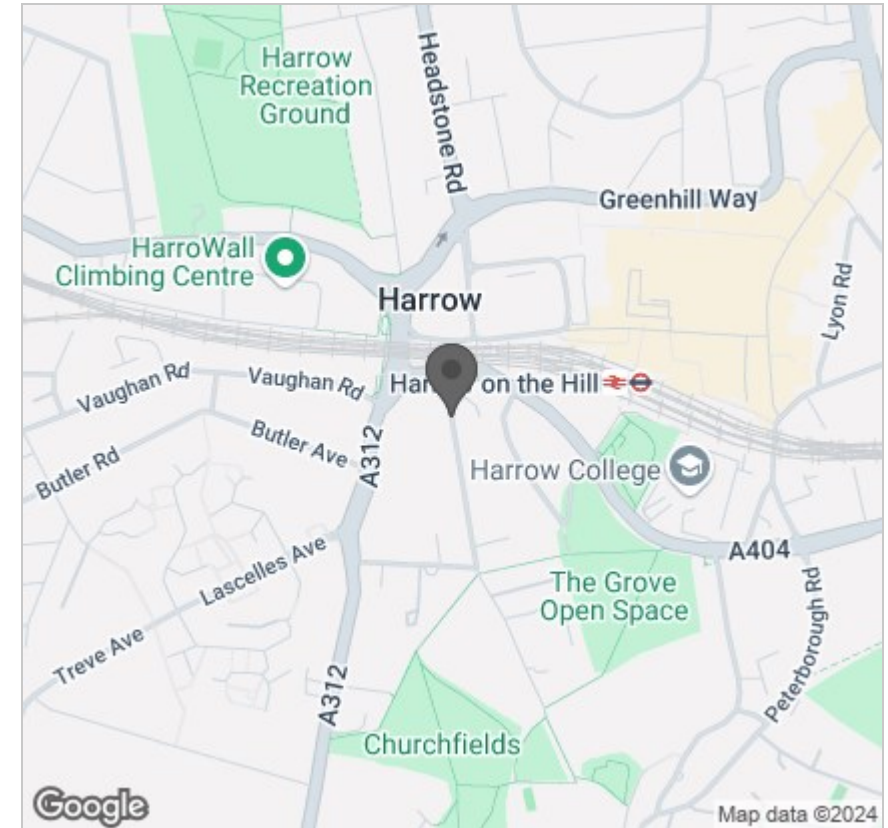
## Floor Plan



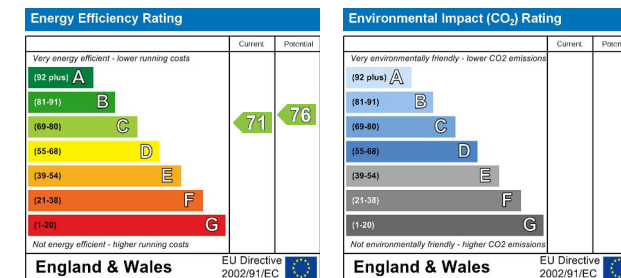
## Viewing

Please contact our Harrow on the Hill Office on 020 8422 3333 if you wish to arrange a viewing appointment for this property or require further information.

## Area Map



## Energy Efficiency Graph



These particulars, whilst believed to be accurate are set out as a general outline only for guidance and do not constitute any part of an offer or contract. Intending purchasers should not rely on them as statements of representation of fact, but must satisfy themselves by inspection or otherwise as to their accuracy. No person in this firm's employment has the authority to make or give any representation or warranty in respect of the property.

33-35 High Street, Harrow On The Hill, Harrow, Middlesex, HA1 3HT  
Tel: 020 8422 3333 Email: enquiries@wilson-hawkins.co.uk www.wilson-hawkins.co.uk