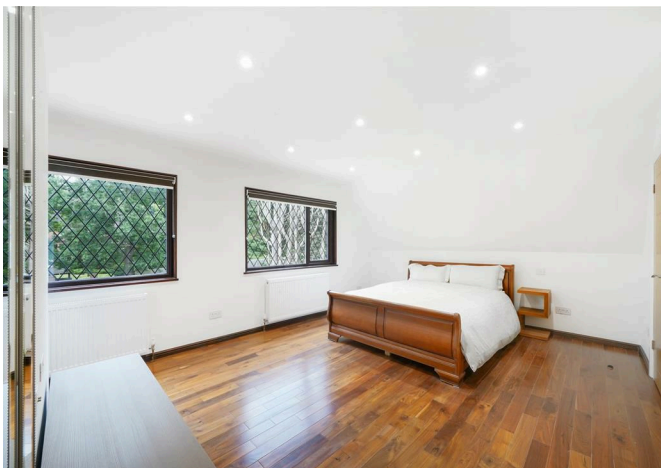
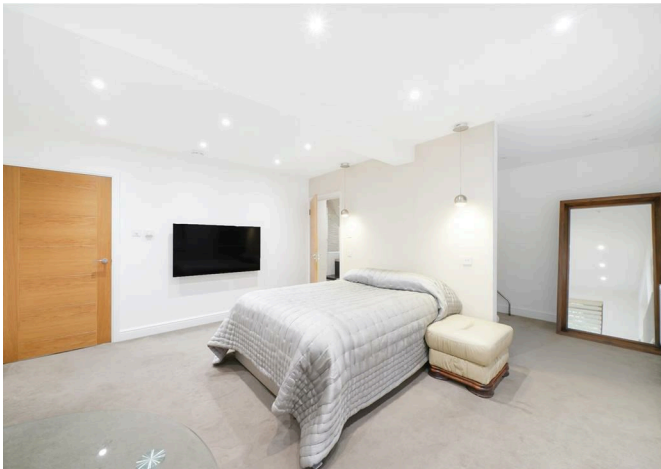




Inglenook South Hill Avenue, Harrow, London, HA1 3PA  
**£4,495 Per Month**



## Inglenook South Hill Avenue, Harrow, London, HA1 3PA

**£4,495 Per Month**

Elegant 5-Bedroom, 3-Bathroom Family Home on South Hill Avenue, Harrow on the Hill

Welcome to Inglenook, a magnificent family residence nestled in the prestigious enclave of Harrow on the Hill. This exquisite property exudes sophistication and elegance, offering an unparalleled blend of luxury and comfort, perfect for discerning families seeking a distinguished living experience.

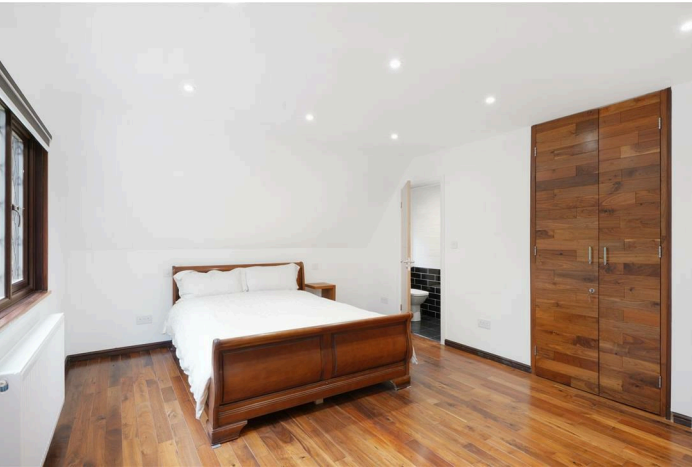
The main house showcases 5 lavishly appointed bedrooms, including 2 sumptuous master suites, each complete with private EnSite bathrooms, ensuring serene and restful retreats. The expansive and tastefully designed lounge provides an opulent setting for both entertaining guests and intimate family moments. The state-of-the-art kitchen featuring top-of-the-line appliances and exquisite finishes, making every culinary endeavour a pleasure. Additionally, there is a charming kitchenette for added convenience and flexibility.

A refined study offers a tranquil space for a home office or private reading sanctuary. The additional utility room is thoughtfully designed to cater to all your storage and laundry needs, seamlessly blending functionality with style. There is also a beautifully appointed family bathroom and an elegant cloakroom for added convenience.

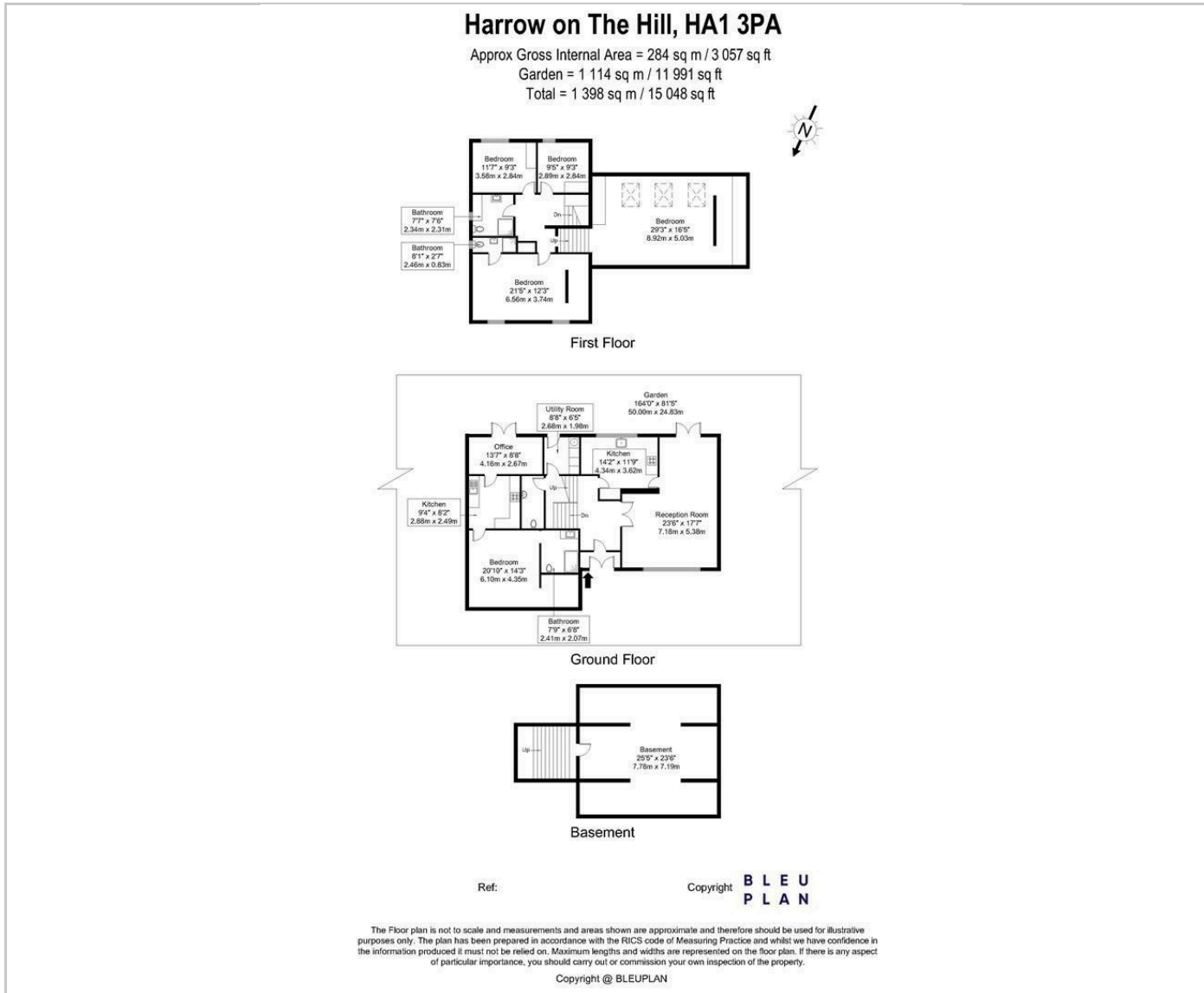
The expansive basement provides ample space for storage and offering endless possibilities for use, such as a wine cellar or home gym.

The meticulously landscaped garden is a verdant oasis perfect for alfresco dining, leisurely afternoons, and sophisticated outdoor entertaining. The grand driveway, with space for up to 6 cars, further underscores the property's commitment to luxury and convenience.

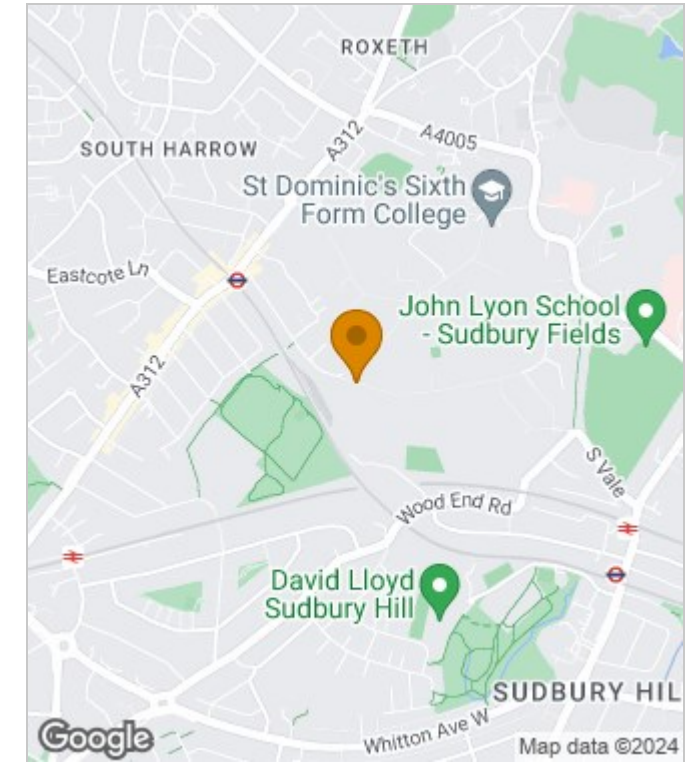
Inglenook offers a rare opportunity to experience the pinnacle of suburban luxury while being just moments away from local amenities, top-rated schools, and excellent transport links. This distinguished home is a



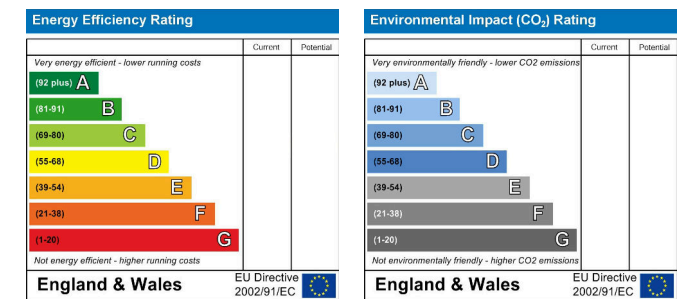
## Floor Plans



## Area Map



## Energy Performance Graph



These particulars, whilst believed to be accurate are set out as a general outline only for guidance and do not constitute any part of an offer or contract. Intending purchasers should not rely on them as statements of representation of fact, but must satisfy themselves by inspection or otherwise as to their accuracy. No person in this firm's employment has the authority to make or give any representation or warranty in respect of the property.